

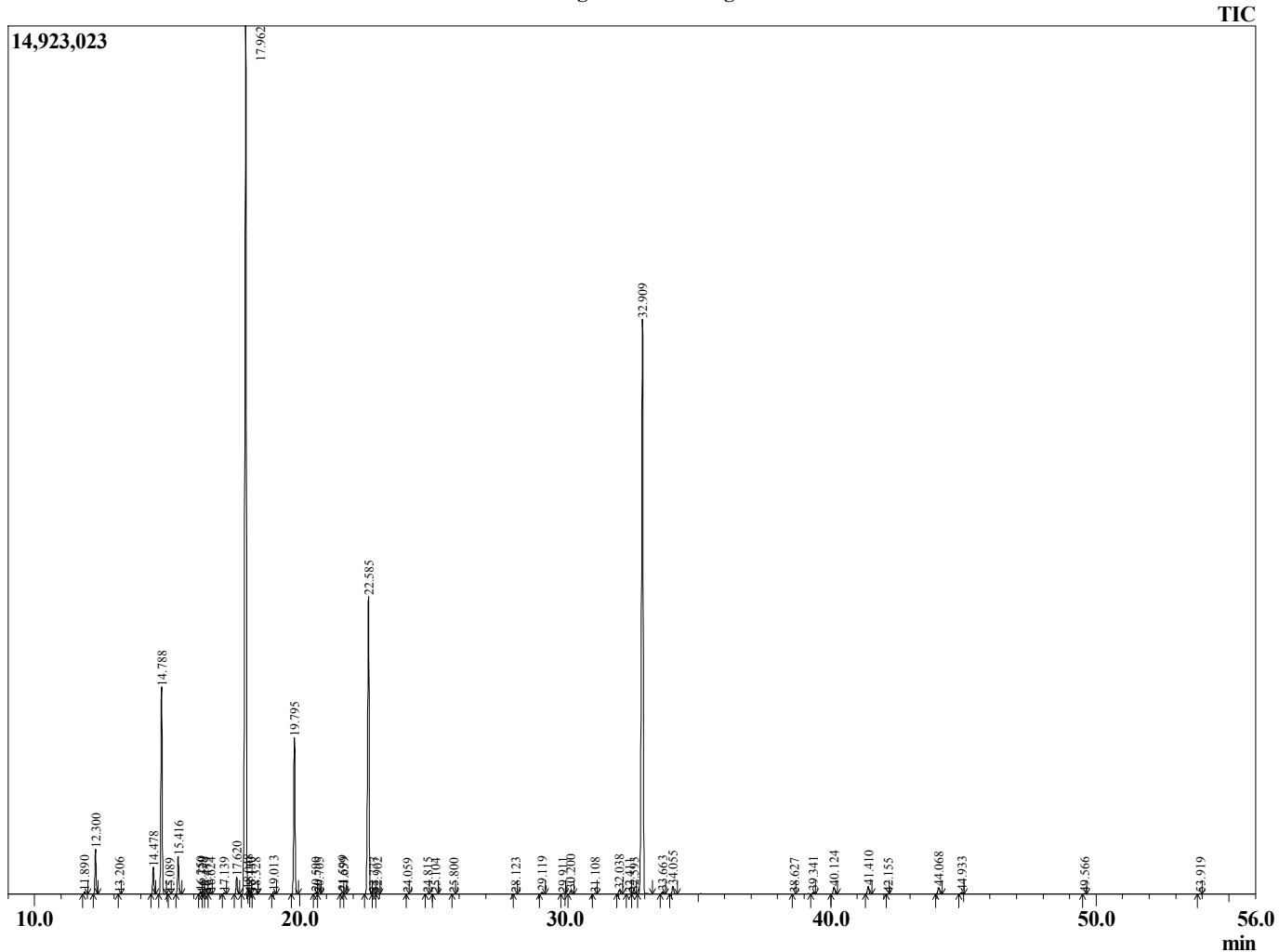
Sample Information

Sample Type : Essential Oil  
 Sample Name : Citrus bergamia

Bergamot FCF  
 LOT# CHE17-EW  
 Country: China



Chromatogram Citrus bergamia



R.Time	Name	Area%
11.890	alpha-Thujene	0.09
12.300	alpha-Pinene	1.46
13.206	Camphene	0.03
14.478	Sabinene	0.95
14.788	beta-Pinene	7.57
15.089	6-Methyl hept-5-en-2-one	0.01
15.416	Myrcene	1.37
16.250	Octanal	0.08
16.329	Pseudolimonene	0.01
16.479	alpha-Phellandrene	0.03
16.624	delta-3-Carene	0.03
17.139	alpha-Terpinene	0.05
17.620	para-Cymene	0.66
17.962	Limonene	37.91
18.048	beta-Phellandrene	0.02
18.130	1,8-Cineole	0.01
18.328	cis-beta-Ocimene	0.03
19.013	trans-beta-Ocimene	0.10
19.795	gamma-Terpinene	6.10
20.590	cis-Linalool oxide (furanoid)	0.06
20.705	Pinol	0.02
21.599	Terpinolene	0.12
21.659	trans-Linalool oxide (furanoid)	0.03
22.585	Linalool	12.76
22.777	Hotrienol	0.03
22.902	Nonanal	0.02
24.059	trans-para-Mentha-2,8-dien-1-ol	0.01
24.815	cis-Limonene oxide	0.02
25.104	trans-Limonene oxide	0.02
25.800	Camphor	0.01
28.123	Terpinen-4-ol	0.01
29.119	alpha-Terpineol	0.08
29.911	Decanal	0.03
30.200	Octyl acetate	0.15
31.108	Nerol	0.02
32.038	Neral	0.19
32.411	Carvone	0.02
32.593	Unidentified	0.05
32.909	Linalyl acetate	28.22
33.663	Unidentified	0.10
34.055	Geranial	0.34
38.627	delta-Elementene	0.01
39.341	alpha-Terpinyl acetate	0.08
40.124	Neryl acetate	0.33
41.410	Geranyl acetate	0.34
42.155	beta-Elementene	0.01
44.068	beta-Caryophyllene	0.33
44.933	trans-alpha-Bergamotene	0.07
49.566	beta-Bisabolene	0.02
53.919	Caryophyllene oxide	0.01
		100.00